

The Fountain Theatre Presents the World Premiere of

FATHER LAND

CONCEIVED AND DIRECTED BY STEPHEN SACHS



THE **F**OUNTAIN Theatre
INTIMATE.
EXCELLENT.



Now in its 34th year, The Fountain Theatre is one of the most highly regarded theatres in Los Angeles. Founded in 1990 by Co-Artistic Directors Deborah Culver Lawlor and Stephen Sachs, the Fountain is dedicated to creating, developing, and producing plays that dramatize urgent issues and matters of the heart, reflecting the diversity of Los Angeles and the nation.

Leading the way out of the pandemic with the installation of its Outdoor Stage in 2021, the Fountain produces full seasons of plays on two stages year-round. Fountain Theatre productions have won hundreds of awards for all areas of production, performance, and design. The Fountain is the recipient of the Los Angeles Drama Critics Circle's Margaret Harford Award for sustained excellence in theater, presented for "outstanding productions of meaningful new plays and first-class performances spanning three decades." Los Angeles Times theater critic Charles McNulty called the Fountain "L.A.'s most enterprising intimate theater [that] continues to punch far above its weight... No L.A. theater has done a better job of asking us to reexamine our lives through the lens of acute contemporary drama this year than the Fountain." The L.A. City Council honored the Fountain for "achieving a position of leadership in the Los Angeles theater community... producing meaningful new plays of social and political importance that enrich the lives of the citizens of Los Angeles."

Fountain projects have been seen in regional theaters around the country, Off-Broadway, on the West End, and around the world. Fountain plays have been made into movies, radio dramas, podcasts, and have been the subject of documentary films. Two recent Pulitzer Prize winners (Martyna Majok's *Cost of Living* and *Between Riverside and Crazy* by Stephen Adly Guirgis) were premiered in Los Angeles at the Fountain.

The Fountain was instrumental in the founding of Deaf West Theatre in 1991. It became the Los Angeles artistic home of internationally renowned playwright Athol Fugard, introduced L.A. to the work of Tarell Alvin McCraney, and debuted the world premiere of a new play by Tony-winner Robert Schenkkan about U.S. immigration policy. Last season, once again giving voice to the urgency of the moment, the Fountain mounted a hyper-staged reading of Lisa Loomer's *Roe* in response to the Supreme Court ruling overturning *Roe v Wade*.

Two groundbreaking arts education programs launched by the Fountain serve students and young people throughout Los Angeles. Fountain Voices brings theatre professionals into high school classrooms, and *Walking the Beat* joins inner-city youth with police officers to create a theatre piece that they perform together.

The Fountain Theatre

Stephen Sachs *Artistic Director, Co-Founder*

Simon Levy *Producing Director* · James Bennett *Producer*

Scott Tuomey *Technical Director* · Barbara Goodhill *Director of Development*

Lucy Pollak *Public Relations* · Nathan James *Theatre Education Manager / Social Media Manager*

Peter Carrisoza *Accountant* · Terri Roberts *Café / Costume Maintenance*

Liz Aguilar *Box Office* · Melina Young *Box Office*

Harout Chrakian *Parking Attendant* · Jennifer Brasuell *House Manager*

Fountain Theatre Board of Directors

Miles Benickes · Anne Brener · Diana Buckhantz · Carrie Chassin · Lois Fishman · Erin Kaplan
Karen Kondazian · Dick Motika · Theo Perkins · Margaret Phillips · David L. Volk · Dorothy Wolpert
Donald Zachary · Jason Zelin



Presents

the world premiere of

FATHERLAND

a new work of verbatim theatre
conceived and directed by **Stephen Sachs**

starring

Ron Bottitta Patrick Keleher
Anna Khaja Larry Poindexter

Sound Design
Stewart Blackwood

Lighting Design
Alison Brummer

Scenic Design
Joel Daavid

Prop Design
Jenine MacDonald

Costume Design
Danyeale Thomas

Prod. Stage Mgr.
Sati Thyme

Technical Director
Scott Tuomey

Produced By
The Fountain Theatre

Executive Producer
Barbara Herman

Producers
Dr. Robert G. Meadow & Carrie Menkel-Meadow

Producing Underwriters
Laurel & Robert Silton



CAST

(in alphabetical order)

Father **Ron Bottitta**

Son **Patrick Keleher**

U.S. Attorney **Anna Khaja***

Defense Attorney **Larry Poindexter**

*Member of Actors' Equity Association,
the union of professional actors and stage managers in the United States

Fatherland is performed in 80 minutes
with no intermission

Time: Thursday, March 3, 2022, and before.

Place: United States District Court for the District of Columbia, and elsewhere.

Fatherland is verbatim theatre.

Every word comes from court evidence, public statements, and the official court transcript of THE UNITED STATES VS. GUY WESLEY REFFITT, the jury trial held before the United States District Court, District of Columbia, from February 28, 2022, to March 8, 2022.

The Fountain Theatre thanks these organizations for their partnership and support



THE AUDREY & SYDNEY IRMAS
CHARITABLE FOUNDATION



Carl & Roberta
Deutsch Foundation

National Endowment for the Arts

The Ralph M. Parsons Foundation



National
New Play
Network



DEPARTMENT OF CULTURAL AFFAIRS
City of Los Angeles

Ring
Foundation



THE DAVID LEE FOUNDATION

The Nancy E. Barton Foundation

The Vladimir and Araxia Buckhantz Foundation

FROM THE ARTISTIC DIRECTOR



Welcome! We begin 2024 with the true story of a young man who must summon the moral courage to speak the truth at the risk of upending his life and casting his family into turmoil. Unlike characters in a scripted play, the people you meet in *Fatherland* are not made up. They are real. Every word spoken comes from court testimony, public statements, and case evidence. In this urgent election year, when the fate of our nation teeters before us, *Fatherland* reminds us of the human cost of cult worship and dangerous ideology. A warning cry for our country, at its core, *Fatherland* brings home the struggle of a father and son, each called to take action without losing his soul. What would you do?

Onward
Stephen Sachs

BARBARA HERMAN, EXECUTIVE PRODUCER

I have always loved going to the theatre. One of my most treasured memories is going to the theatre with my parents when I was a little girl. Several years ago, I was thrilled to discover the Fountain, a little gem of a theatre in Los Angeles. One of my favorite things to do is gather a group of friends and take them to the Fountain. We have so much fun! We have dinner at Marouch and then go to the Fountain to enjoy whatever is on the stage. It's always memorable.



To me, the Fountain Theatre offers one of the best cultural experiences in Los Angeles. There are just so many reasons. The first, of course, is the excellence of the productions. Everything is done beautifully. Total artistry. The directing, acting, and sets are consistently excellent. I've never seen a show that I didn't either love or like. Now that's quite a track record! But what's equally remarkable is the consistent sensitivity and timeliness of the plays presented. Every play the Fountain mounts is relevant and thought-provoking. My friends and I love to discuss the plays after the show, whether we do it on the sidewalk or up in the cafe.

But for me, the Fountain is more than a theatre. It is a community. Everyone greets me by name and makes me feel welcome. It's a very personal place, not an institution. And that warmth, that personal connection is very unique, and refreshing. Everything at the Fountain seems to come from the heart.

ROBERT MEADOW AND CARRIE MENDEL-MEADOW, PRODUCERS



Carrie Menkel-Meadow and Bob Meadow, are thrilled to produce *Fatherland*, Stephen Sachs' brilliant adaptation of an important American trial, a play which is especially important in these troubling times. With our professional backgrounds in law and politics, this is a particularly appropriate play for us to produce. Carrie and Bob grew up in New York City where they enjoyed all forms of theatre from very young ages. Since moving to LA in the late 1970s they have been supporters of many small theatres in LA (the best in the country!), but the Fountain Theatre remains the best and our favorite. We say BRAVO to The Fountain and don't be just entertained. Get out and VOTE!!

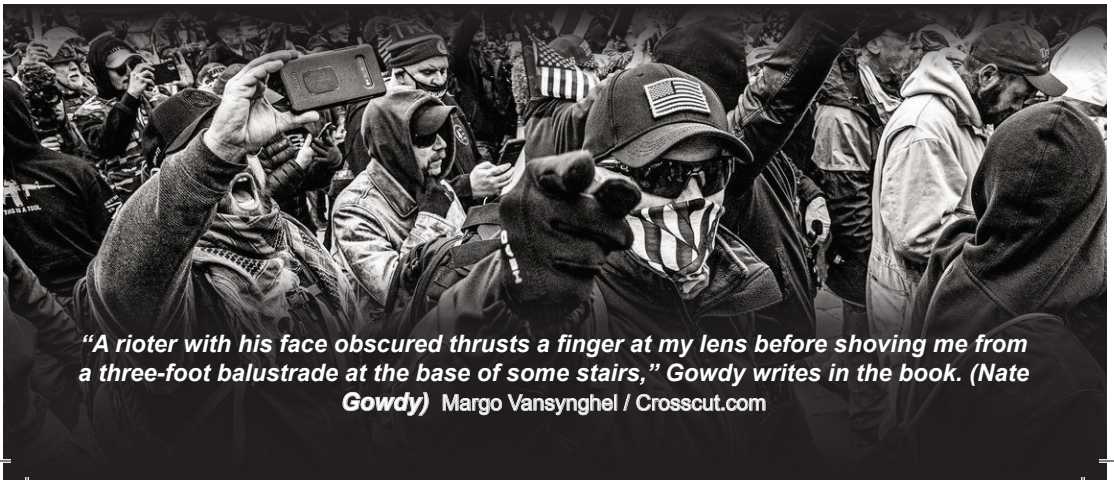
WHO'S WHO



RON BOTTITTA (Father) is delighted to return to The Fountain Theatre, where his credits include *The Lifespan of a Fact* and *The Children*. Before lockdown he appeared in *Earthquakes in London* at Rogue Machine, and Sarah Kane's *4.48 Psychosis* at Son of Se-mele. Other productions at Rogue, where he is a company member, include *Oppenheimer*, *Honky* (Ovation Nominee, Best Play), *The Sunset Limited* (LA Weekly Nomination, Best Play), *Monkey Adored*, and *Razorback*. Since 2010 he's been the monthly host of RMT's spoken word *Rant and Rave*. At Los Angeles Theatre Works: *The Sisters Matsumoto*, *I Love Lucy...*, and two tours of *Judgment at Nuremberg*. Other LA credits include John Pollono's *Rules of Seconds* at LATC, *Superior Donuts* and *Yes, Prime Minister* at The Geffen. At The Odyssey: *Loot*, *Faith Healer* (Ovation Nominee, Best Actor), *Hir*, *Arsenic and Old Lace*, *Rank*, and *Theatre in the Dark* (Ovation Nominee, Best Ensemble) among others. Recent TV: *The Mandalorian*, *How to Get Away with Murder*, *Get Shorty*, *Elementary*, *Supergirl* and *Grey's Anatomy*. Recent Film: *Lift*, *Fishmonger*, *The Marvels*, *Avengers: Endgame*, *Black Panther*, *Thor: Ragnarok*, *The Mountain Between Us*, *Mad Max: Fury Road*, the not so recent *Mr. and Mrs. Smith*, and a boat load of commercials. Training: B.A., U.C. Berkeley, M.F.A., N.Y.U. Life: Dad to Dan, Sasha and Mika, married to actress Kathryn Kelley, Iron Butt BMW Motorcyclist, Aviator. Ron is currently developing a one-man show entitled Hero, about the notorious Cold War British double agent George Blake. For the Gamers out there: he plays recurring cult favorite Capt. Butcher in *Call of Duty*.



PATRICK KELEHER (Son) is originally from a place you've probably never heard of: Carbondale, Colorado. "It's close to Aspen." Now 21 years old, Patrick has been a performer all his life. Notable roles include - Huck Finn in *Big River: The Adventures of Huckleberry Finn*, Dewey Finn in *School of Rock*, and Rudolpho in *A View from the Bridge*. A recent graduate with a BS in Film from Full Sail University in Orlando, Florida. Patrick's goal is to be in top box office movies. He just completed a road trip across 11 countries in Africa, backpacked through Asia, and bummed around Australia. This took six months. When Patrick returned from his travels, he flew to LA from Colorado and auditioned for *Fatherland*. He flew back a day later, and while he was getting off the plane, he got an email that said he got the part. So he quit his job, packed his car, and drove to LA. Patrick thanks Stephen Sachs for giving him his first opportunity to work in LA. Patrick would like to give a shoutout to his girlfriend. This is what he wrote: "Hi Emmie! Please move out to LA with me!"



"A rioter with his face obscured thrusts a finger at my lens before shoving me from a three-foot balustrade at the base of some stairs," Gowdy writes in the book. (Nate Gowdy) Margo Vansynghel / Crosscut.com

WHO'S WHO



ANNA KHAJA (U.S. Attorney) Previously at the Fountain: *My Name Is Asher Lev* (Ovation Nomination for Lead Actress). Off-Broadway: *Shaheed: The Dream and Death of Benazir Bhutto* (Culture Project in NYC, Ovation Award Winner for Lead Actress in LA). Regional: *Stuff Happens* (Mark Taper Forum, Ovation Nomination), *Around the World In 80 Days* (Cleveland Playhouse), *Free Outgoing* (East West Players). Other LA Theatre: *Three Days In The Country* (Antaeus), *Palace Of The End* (NoHo Arts,

LA Weekly Award, Ovation Nomination), *Falling* (Rogue Machine), *Earthquakes In London* (Rogue Machine); *No Word In Guyanese For Me* (GLAAD Award). As a writer, she is the recipient of the Google x Black List Storytelling Fellowship and the grand prize winner of Screencraft's 2023 Pilot Writing competition. Anna can also be seen in recurring roles on such television shows as *The Lincoln Lawyer*, *The Good Place*, *The Walking Dead: World Beyond*, *Quantico*, *Madam Secretary* and *Silicon Valley*.



LARRY POINDEXTER (Defense Attorney) has acted in hundreds of hours of episodic TV, MOWs, pilots and films, including *Curb Your Enthusiasm*, *Station 19* and *The Rookie*. Other recent TV includes; *S.W.A.T.*, *All Rise*, *N.C.I.S.*, and *HAWAII 5-0*, along with many more. On film, he's best known for *17 Again* opposite Zack Efron and can be seen pretty much every hour on cable opposite Samuel L. Jackson and Colin Farrell in *S.W.A.T.* On stage he most

recently played the lead in the new musical *The Devil You Know*, a rhythm & blues story – for which he also wrote the music and lyrics – and which was nominated for an Ovation Award. He played Benedick in *Much A Doobie Brothers About Nothing* for the Troubies, of which he is a Founding Member. He also appeared with them in *The Comedy of Aerosmith & Fleetwood Macbeth*. He was Shannon in the L.A. revival of *The Night Of The Iguana* here at The Fountain and appeared in *Tender is the Night*, *The Golden Gate* and *The Boys in the Band* here as well. He played Jack/Jesus in the “hit” musical *Reefer Madness* and Mario the mysterious chauffeur in *Tamara* as well as many, many more.



An Uncle Sam impersonator stands amid the crowds at the Capitol on Jan. 6.
(Nate Gowdy) Margo Vansynghel / Crosscut.com

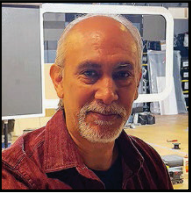


Pictured here, a man wearing a ski mask and tactical vest has brought a radio transceiver, an earpiece, scissors and bear spray to the Capitol. "Although today the Proud Boys ditch their traditional dress code in hopes of anonymity, many members wear strategic neon orange hats for self-identification," Gowdy writes.

(Nate Gowdy)

Margo Vansynghe / Crosscut.com

CREATIVE TEAM



JOEL DAAVID (Scenic Design) Texan/LA resident since 1993. Joel has become an award-winning director/set designer since attending the American Film Institute for Cinematography. His career accomplishments also include cinematography for film and video projects. Joel's most notable awards include the Ovation, LA Weekly, NAACP and LADCC Theater Awards. He directed/ designed the award- winning production of *The Miracle Worker* at the Matrix and Edgemar Theatres and the new production of Tennessee Williams' *Baby Doll* at the Lillian Theatre. Joel directed/ designed the multi-award-winning Frankenstein for Theatre Tallahassee, the epic story of *Camille (Claudel)* at the Greenway Arts Alliance, and most recently the world premiere musical Caligari's *Cabinet of Curiosities* written by Vanessa Stewart. www.joeldaavid-director.com



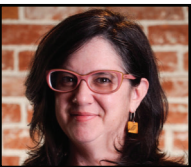
ALISON BRUMMER (Lighting Design) Previous work with the Fountain Theatre includes *Lifespan of a Fact*, *ROE*, the *Walking The Beat* productions of *Flicker* and *C.H.I.N. Up!*, and *CITIZEN* produced with Grand Performances at INNER-CITY ARTS. Alison is currently a Theater Planner with the architecture firm DLR Group.



STEWART BLACKWOOD (Sound Design) is a composer, sound designer, and creative coder whose work has been experienced nationally. He is an Assistant Professor of Composition and Sound Design at Carnegie Mellon University. Places his work has been shown/heard: Center Theatre Group, Cleveland Play House, Island Shakespeare Festival, Cygnet Theater, Center for the Performing Arts at Pennsylvania State, Hangar Theatre, Black Lives Black Words, Maelstrom Collaborative Arts, Factory of Terror, Rubber City Theater. He holds an MFA from UC San Diego in Sound Design and Technology. www.stewartblackwood.com



DANYELE THOMAS (Costume Design) is thrilled to officially be a part of the Fountain Theatre family. She is an accomplished Los Angeles-based Costume Designer, Assistant Costume Designer, Wardrobe Stylist, and Jewelry Designer with design credits and collaborations with the Pasadena Playhouse, Los Angeles Opera, Kirk Douglas Theatre, Robey Theatre Company, and others.



JENINE MACDONALD (Properties Design) is thrilled to be working on her first production with The Fountain Theatre! Local productions include: *Oedipus* at Getty Villa; *Birds of North America*, *Picnic*, *Remembering the Future*, *God of Carnage*, *A Public Reading of An Unproduced Screenplay About the Death of Walt Disney*, *Paradise*, *The Death and Life of Mary Jo Kopechne*, *Beckett5* at Odyssey Theatre; *Group Therapy* at Theatre 68, *A Great Wilderness* at Matrix Theatre; *A Little Night Music* at Greenway Court Theatre; *Singing Revolution* at Broadwater Theater; *Salvage* at Hudson Theatres and Lounge Theatre, *The Direction Home* at Actors Company; *Crime and Punishment* at Edgemar Center; Jenine received her B.A. in Theatre from Columbia College Chicago and was honored with a 2021-2022 StageSceneLA Scenie Award for Outstanding Properties Design.

CREATIVE TEAM



SATI THYME (Production Stage Manager) is thrilled to be the Stage Manager for *Fatherland!* Sati has been involved in Theatre her entire life in many different aspects, from performing to tech to management and more. She received her Bachelor's Degree in Stage Management from CSU Fullerton and typically works as a Stage Manager all over the LA/OC area. This past year she spent touring around the US, followed by managing the interactive horror production *Delusion*. But she is always excited when she is able to come back and work with The Fountain Theatre again!



CONGRATULATIONS TO ALL OUR SEAT DONORS

Joni & Miles Benickes	Karen Kondazian
Toby & Daniel Bernstein	Sheila & Alan Lamson
David Blane	Simon Levy
Adrienne Brandriss	Anita Lorber
Rabbi Anne Brener	Robert G Meadow
Diana Buckhantz	& Carrie Mendel Meadow
Cate Caplin	Lisa Pelikan
Carrie Chassin & Jochen Haber	The Phillips-Gerla Family
Barbara Cohn	Rita Rothman
Lorraine Fishman	Lorraine & Lonnie Shield
& Malcolm Armstrong	Stephen Sachs
Drs. Marjorie & Richard Fond	& Jacqueline Schultz
Susan Golden	Susan Stockel
Barbara Goodhill	Mary Jo & David Volk
Barbara & Howard Gradet	Ruth Waddell & Eric Stockel
Geo Hartley	Karen Malina White
Barbara Herman	Dorothy Wolpert
Rabbi James & Mrs Sue Kaufman	Jerrie Whitfield & Richard Motika

As we at The Fountain look forward to celebrating our 34th birthday, we encourage all our Fountain Family members to put your names on our beautiful new theatre seats. By naming a seat — or dedicating a seat to someone you love — you will be linking your name to The Fountain and all that it represents. In perpetuity.

Contact the Development Department 323-663-1525 x 307 development@fountaintheatre.com

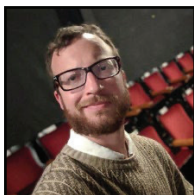
Special Thanks

Charge Scenic Artist - Marine Walton
Lead Carpenter / Scenic - Alaya Karasso
Scenic - Sky Mireles

Carpenter / Scenic - Maya Gonzalez
Carpenter / Scenic - Pasha Wynant
Scenic Foreman - Joel Daavid

JB Blanc - Voiceover Actor

FOUNTAIN STAFF

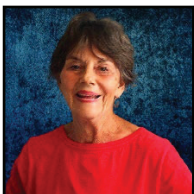


JAMES BENNETT (Producer) joined the Fountain team in 2009 and has smiled and whistled, much to the irritation of everyone else, every day ever since. James enjoys chatting, hobnobbing, and wine-sipping with all the theatre's many fine friends, family, and patrons. For work, he can be found running the whole stack of theatre activities, whether that's toiling on a pile of paperwork, coiled into a pretzel in the tech booth, or producing fabulous Flamenco shows. He's compelled to the theatre by its immediacy,

its intimacy – the visceral impact of being so close to real humans with real sweat and real spit. In a world that's increasingly disjointed, behind glass, and far away – theatre becomes more powerful than ever.

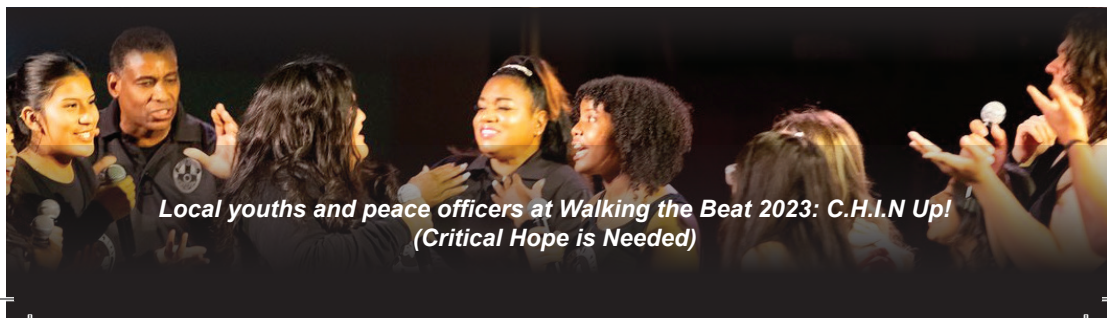


PETER CARRISOZA (Accountant) obtained his business degree from CSU Northridge and has worked as an accountant/financial analyst in a variety of industries ranging from entertainment to defense contracting. He is currently enjoying his third year at the Fountain Theatre



DEBORAH CULVER LAWLOR (Co-Founder) grew up in Riverside, California. Her career began in the '60s as a dancer, choreographer, and actor in New York. She moved to South India in 1968. There, she pioneered Auroville, a utopian international community created for human unity. Returning to the U.S., she and Stephen Sachs co-founded The Fountain Theatre in 1990. Dubbed the "Fountain Theatre's godmother of flamenco" by the L.A. Times,

she guided the company's renowned "*Forever Flamenco*" series. Other dance projects at the Fountain include *The Women of Guernica*, Lawlor's flamenco-based adaptation of *Euripides' The Trojan Women*, which she also directed; *Love Letters of the Great Romantics*; *The Path of Love*, and *The Song of Songs*, with music by Al Carmines. In 2006, she directed the West Coast premiere of *Taxi to Jannah*. In 2017, the Fountain premiered Lawlor's play *Freddy*. In 2010, Actors' Equity Association honored Deborah with its Diversity Award for her dedication to presenting work at the Fountain that is culturally diverse. She received special commendations from the City of Los Angeles and the Spanish Consulate for her contributions to the art of flamenco. Deborah passed away in May 2023. Her legacy lives on at the Fountain Theatre and in the many people whose lives she changed.



*Local youths and peace officers at Walking the Beat 2023: C.H.I.N Up!
(Critical Hope is Needed)*

FOUNTAIN STAFF



BARBARA GOODHILL (Director of Development) has been Director of Development at The Fountain Theatre since 2013. Barbara's wealth of experience, innovative thinking, and dedication have resulted in significant growth in The Fountain's donor community and strengthened relationships with the funding community. A passionate believer in the power of live theatre to open hearts and encourage empathy, Barbara is deeply committed to The Fountain, its vision, mission, and future goals. "Institutions like The Fountain Theatre are vital to the health of a diverse, compassionate society." Barbara loves the opportunity to meet the many wonderful patrons who form The Fountain Theatre's family and is always happy to receive your calls and greet you at the theatre. Barbara received her B.A. from UC Berkeley and her Masters from UCLA.



NATHAN JAMES (Theatre Education & Social Media Manager) is a proud native of Pittsburgh, where he began his career with Kuntu Repertory Theater. He received a B.A. from the University of Pittsburgh and an M.F.A from Penn State University, where he also served as an instructor in the Fundamentals of Acting. With over twenty years in arts education, he started out as a teaching artist for the Pittsburgh C.L.O. While living in New York, he taught stage combat for the McCarter Theater at Princeton University, and screenwriting for Urban Arts Partnership and HBO (MAX). Nathan is one of the seven playwrights who contributed to the New Black Festival's 'Hands Up: Seven Playwrights, Seven Testaments,' which was featured in American Theater Magazine and on BBC Radio, with his specific piece chosen as BBC Radio's Play of the Week. Theater Credits: Off-Broadway: *Travisville* (Ensemble Studio Theatre), *Playing with Fire* (Gene Frankel Theatre), *Black Angels Over Tuskegee* (St. Luke's Theatre). NY: *Maid's Door* (Billy Holiday Theatre). Film/TV credits: *Standing Up*, *Falling Down* (Tilted Windmill Productions), *Madam Secretary* (CBS), *Shades of Blue* (NBC), *Quantico* (ABC), *Blindspot* (NBC), *VINYL* (HBO), *Person of Interest* (CBS), *Blue Bloods* (CBS), *The Path* (Hulu), *Service to Man* (STARZ).



*The Fountain Theatre's 2023 outdoor production of
Last Summer at Bluefish Cove*

FOUNTAIN STAFF



SIMON LEVY (Producing Director) has been Producing Director of the Fountain Theatre since 1993. The Los Angeles Drama Critics Circle honored him with the Milton Katselas Award for Lifetime Achievement in Directing. Recent shows he's directed at the Fountain include *The Lifespan of a Fact* (reprised at the Rubicon Theatre in Ventura), *The Children*, *Daniel's Husband*, and *The Chosen*, among the 25 shows he's directed here. His stage adaptation of F. Scott Fitzgerald's *The Great Gatsby* (Finalist for the PEN Literary Award in Drama) is produced widely throughout the world. It is the only stage adaptation authorized by the Fitzgerald Estate, and is published by Dramatists Play Service, along with his adaptations of *Tender is the Night* (winner of the PEN Literary Award in Drama) and *The Last Tycoon*. He has produced dozens of shows at the Fountain over the past 30 years. Prior to coming to Los Angeles, he lived in San Francisco, where he was the General Manager of Beach Blanket Babylon, Artistic Director of The One Act Theatre Company, and Executive Director of Theatre Bay Area. He belongs to many theatre, human rights, and political advocacy groups. www.simonlevy.com.



LUCY POLLAK (Publicist) has been providing publicity services to the Los Angeles performing arts community for the past 30 years and is honored to have represented the Fountain Theatre since 2008. Prior to becoming a publicist, Lucy spent ten years as the production manager/staff producer at the Odyssey Theatre, earning an L.A. Drama Critics' Circle Award, an L.A. Weekly Award, 4 Drama-Logue Awards, and a Women in Theatre Recognition Award



TERRI ROBERTS* (Café Manager/Costume Maintenance) has made the Fountain Theatre her artistic home for nearly 14 years. She wears many hats, including the care of costumes, props, and serving Fountain patrons as manager of the charming indoor/outdoor Fountain Theatre café. Terri also works in stage management (production/assistant stage manager on 20 fabulous Fountain shows), and she loves every opportunity to also serve as a casting assistant, props designer/set dresser, and coach for actors. Terri spent over 25 years as a theatre/entertainment writer. Her works have appeared in *Variety*, *Performances*, *Back Stage West*, *Ross Reports*, *The Sondheim Review*, *LA Weekly*, *LA Parent*, *ShowMag.com*, and *TheaterMania.com*. She is currently focused on fiction writing. Deep gratitude, as always, to Stephen and Simon. Member of Actors' Equity Association.



**SHOW THIS PROGRAM. SAVE 10%
ANY ORDER AT THE LIQUOR FOUNTAIN.
TWO BLOCKS WEST.
IF YOU BOUGHT A DRINK TONIGHT, THEY SUPPLIED IT!**

FOUNTAIN STAFF



STEPHEN SACHS (Conceiver/Director) is an award-winning playwright, director, producer, and the Artistic Director of the Fountain Theatre, which he co-founded in 1990. He is the author of eighteen plays that have been produced across the country, Off-Broadway, and worldwide. His comedy/drama *Bakersfield Mist* ran for seven months at the Fountain, then in London starring Kathleen Turner. He wrote the screenplay for the film version of his play

Sweet Nothing in my Ear for CBS starring Marlee Matlin and Jeff Daniels. He has directed dozens of award-winning productions at the Fountain and in regional theaters nationwide. He directed the inaugural production of the Outdoor Classical Theater at the Getty Villa in Malibu and several premieres of new plays by Athol Fugard in Los Angeles, New York, and the UK. Sachs was instrumental in the launching of Deaf West Theatre at the Fountain in 1991. He has received every theatre award in Los Angeles. He was recently honored by the Los Angeles City Council for "his visionary contributions to the cultural life of Los Angeles." www.stephensachs.com



SCOTT TUOMEY (Technical Director) has been Technical Director at the Fountain since its inaugural production of *Winter Crane* in 1990. He has overseen virtually every Fountain production, on and off-site, including their numerous flamenco shows, and has appeared here on our stage in *Declarations: Love Letters of the Great Romantics*, and the Fountain's hit productions of *Master Class* and *Joe Turners' Come and Gone*. Scott's talents as actor-

singer-guitarist were also seen in the Shakespeare Festival L.A. productions of *You Like It* and *Twelfth Night* at the Globe



B&W January 6 Photographs Courtesy of Nate Gowdy

INSURRECTION

Published by Pigeon Editions, January 2023

ISBN-13: 978-1-7354812-2-7

www.nategowdy.com

The Fountain Fund

Supporting Live Intimate Theatre in Los Angeles

We gratefully acknowledge our wonderful donors. The following represents contributions of \$50 - \$45,000 made to The Fountain from December 2022 - January 2024

Visionaries (\$45,000+)

Anonymous
The Ahmanson Fdn
The Annenberg Fdn
Diana Buckhantz/The
Vladimir & Araxia Buckhantz Fdn
Barbara Herman
Karen Kondazian
Los Angeles County Arts & Culture
Sheila & Alan Lamson
Deborah Culver Lawlor
The David E. Lee Fdn
The Estate of Deborah
Culver Lawlor
The Estate of Lois Tandy

Champions (\$20,000+)

Anonymous
Carrie Chassin & Jochen Haber
Department of Cultural
Affairs, Los Angeles
The Carl & Roberta Deutsch Fdn
Rabbi Anne Brenner
LA County Dept of Probation
The Shubert Foundation
Mary Jo & David Volk

Guardians (\$10,000+)

Adrienne Brandriss
Nancy E. Barton Foundation
Joni & Miles Benickes
Lois Fishman
The Audrey & Sydney Irmas
Charitable Foundation
Carrie Merkel Meadow &
Robert Meadow
Cynthia Miscikowski
The Phillips-Gerla Family
Susan Stockel
Allison Thomas
Warner Media
Dorothy Wolpert

Angels (\$5,000+)

The Berger Family Fdn
Caplin Foundation
Barbara Cohn
Lorraine Fishman &
Malcolm Armstrong
Barbara Goodhill
Geo Hartley
Mitchell Heskell
Barbara Mitchell & John
Beard
Judith Miller
Jon & Dianne Moonves
Sharyl Overholser z"l
Jerrie Whitfield & Richard
Motika
Rita Rothman
Jason Zelin & Allison Stein

Producers (\$2,000+)

Anonymous
Drs. Susan. E Bennett & Gerry Pier
Paul Bluementhal & Lynne Gaffikin
Kathie Boyle & Richard Yaffe
Lois Fishman
Pat Green & Vic Cole
Kerry Ehrin
Phyllis & Bryan Ellickson
Roger Janeway
Anita Lorber
Jon Neustadter
Rabbi James & Sue Kaufman
Laurel & Robert Silton
Ruth Waddell & Eric Stockel
Jerrie Whitfield & Richard Motika
Suzanne & Donald Zachary

Directors (\$1,000+)

Anonymous
Anonymous
David Blane
Diane Cary
Roberta & Ronald Bloom
Mark Duttwelier & Christine Pajak
Phyllis & Bryan Ellickson
Elizabeth Evans
Diane Gabe
Fariba Ghaffari
Susan Gosden
Barbara & Howard Gradet
Marjorie & Richard Fond
Robert Leventer & Jenna Blaustein
Chuck Mondrus
Lisa Pelikan
Debbi & Ashley Posner
Suzanne & David Robinson
Lorraine & Lonnie Schield
Karen Malina White

Patrons (\$500+)

Linda Adams
Anonymous
Cheryl Armon
Jane Anderson & Tess Ayers
Roberta & Ronald Bloom
Michael Freeman
Carolyn & Bernard Hamilton
Beverly Ingram
Bret Israel
Susan & Joel Klevens
Diana & Joseph Kotzin
Benjamin Kushner
Victoria Lautman
Helene & Jay Lederman
Melissa & Jae Lee
Ruth Matthias & A.E. Benjamin
Faye & Les Mitchnick
Andrea Nelson
Arienne Neumark
Michael Oppenheim

Patrons (\$500+) (cont.)

Susan Steinhauser
Steven Warheit & Chris Christensen

Backers (\$250+)

Esther Lee Alpern
Selma Anderson
VJ Blue
Ramona Bradbury
Deanne Bray & Troy Kotsur
Susan Damante
Joyce A Davis
Linda Dozier
Lorraine Evanoff
H Allen Evans
James Freed
Rosa & Larry Goldstein
Patricia Goldstone
Tracy Gore
Faye Greenberg
Helen Hasenfeld
Jean Himmelstein
Anna Marie Horsford
Jerald & Leana Johnson
Susan & Joel Klevens
Shari Leinwand
Susie Mazur
Myron Meisel
Elizabeth Naftali
Paulina Nobel
Pat Oliansky
Nancy McCoy
John Moschitta
George & Cathi Rimalower
Sally & Brian Rivera
Adrien Survol Rivin
Edwin Robinson
Marleen & Hugh Scheffy
Lynn Sarf
Lisa Smolen
Suanne Spoke
Esther & David Telerant
Toni Sherman

Supporters (\$100+)

Murray Aaronson
John Achorn
Judy & Michael Altman
Tony Amendola
Cecilia Andrews
Bob Ashen
Joel Asher
Diana Bartera
Sandy Baldonado
Jarrett Barrios
Miriam Beckwith
Sandy Berman
Marty Blank
Alan Blumenfeld
Judith & Don Broder

Supporters (cont.)

Sarah Boulton
 Donna Broby
 Maggie Bryant
 John Deans Buchan
 Barbara Burbank
 Judy & Adam Bush
 Bill Butler
 Peter Carrisoza
 Steve Coats
 Nancy Cohen
 Kato Cooks
 Rachel Corell
 David Coscia
 Leigh Curran
 DeMane Davis
 Lawrence Davis
 Joyce Davis
 Avi Dechter
 Marie Monique
 De Varennes
 Edward Dignan
 Barbara Don
 Helen Dosik
 Lenore Dowling
 Julie Downey
 Sylvie Drake
 Michael Edwin
 Gail Eichenthal
 Adrienne Enzer
 Paul Finkel
 Dundas Flaherty
 Linda & Bob Fleischman
 John Flynn
 Sylvia Fogelman
 Michael Freeman
 Ellen & Harvey Friedman
 Lesli Gilmore
 Joan Gianmarco
 Linda Goldberg
 Lynne & Dean Goodhill
 Marcia Goodman
 Annette Gottlieb
 Andrea Graham
 Susan Greenberg
 Doris Haims
 Ann Ryerson Hall
 Michael Halloran
 Leah Heap
 Winifred Hussey
 Sheila & Milton Hyman
 Sybil & Richard Israel
 Marilyn & Robert Johnson
 Clifton Justice & Joshua Ramirez
 Karen Kastle-McCluskey
 Eloise Kearns
 Erica Keeps
 Karen Lachter
 Emily & John Lawrence
 Helene & Jay Lederman
 Anthony Lewis
 Kristin Leuschner
 Carol Lim

Dianne Lyons
 Corey Madden
 Katy Mamen
 Fred Manaster
 Carol & Bruce Marcus
 Dena Marienthal
 Leo Marks
 Pauline Marks
 Marjie Mautner
 Marie Mazzone
 Diane Daves McLaughlin
 Gayle Levinthal
 Nan McNamara
 Deanne Mencher
 Stephen Mendillo
 Allan Miller
 Marlene Mills
 Penni Montalbano
 Roxanne & Richard Morse
 Glen Nave
 Rosalie Newell
 Sheila & Steven Novak
 Barbara Olier
 Deborah Osborn
 David Overly
 Samuel Parnell
 Theodore Perkins
 Evelyn Perl
 Ralph Pezoldt
 Gwynne & Robert Pine
 Evelyn Perl
 Antoinette Perry
 Lenny Potash
 Bill Ratner
 David Reid
 Adrien Survol Rivin
 Pamela Roberts
 Thelma & Eliot Samulon
 Lynne Schroeder
 Kate Shein
 Marty Shelton
 Sandy Schuckett
 Deborah Silverman
 Steve Slaughter
 Janet & Michael Soffer
 Susanne Spira
 Janellen Steininger
 Joel Swetow
 Judith & Melvyn Swope
 Judy & Mark Taylor
 Cynthia Thomas
 Marcelo Tubert
 Patricia & Richard Walter
 Penelope Ward
 Joanne Webb
 Jamie & Larry Weisenberg
 Kathryn & Irwin Weiss
 Jerry Weil
 Laurie & Stan Whitcomb
 Barry Wiener
 Lynda & Darrel Wilson
 Robb Zelonky
 Laura Zucker

Friends (\$50+)

Jane Abrams
 Darla Anderson
 Jaime Arze
 Delano Athias
 Elizabeth Atlee
 Susan Becker
 Sherri Beisner
 Christina Belford
 Antoinette Bill
 Judith Borck
 Carmela Bosko
 Gilbert Glen Brown
 Paul Buch
 Heidi Carignan
 Marlene Carney
 Aimee Carrero
 Juliette Carrillo
 Eileen Cohen
 David Coffman
 Anthony Darin
 Lynne Diamond
 Jeffrey Ellis
 Michelle & Peter Finlayson
 William Gallegos
 Francoise Gerard
 Friends (\$50+)
 Jim Gilchrist
 Mina Glassman
 Barry Glassner
 John Goldenberg
 Nan Goodman
 Lynn Greenwald
 Marilyn & Gabby Gross
 Sandy & Gary Grossman
 Laurie Hasencamp
 Helen Hasenfeld
 Gerald Horn
 Muriel Janes
 Andrew Johnson
 Lila Kates
 Carol Kaplan
 Joanne Kaplan
 Karen Kastle-McCluskey
 John Keleher
 Lilly Labonge
 Susan Laemmler
 Susan Lambert
 Rosalie Lazarus
 Esfir Lebovich
 Pamela Levin
 Joan Levison
 Carol Lewis
 Laura Lippmann
 Cecila Fay & Morris Magid
 Mark Majarian
 Dora Martin Bures
 Bonnie McFarlin
 Daniel McLaughlin
 Florence Mesker
 Lisa Mitchell
 Roy & Setsuko Nakahara
 Celeste & Fred Namath

Myra Newman
 Rick Noguchi
 Kathi O'Donohue
 Sharon Oxborough
 Carolyn Karpin
 Isaac Pachulski
 Rhoda Pell
 Jeff Perry
 Laurie Pincus
 Paul Porter
 Carole Propp
 Carol Pudlin
 Richard Reinhart
 Dennis Ruben
 Doris Sadler Davis
 Carolyn Sax
 Rick Scarry
 Roberta & Ron Schaffer
 Celia Shaefer
 Helene Schnider-Dobrer
 Rosemary Schriber
 Mark Sender
 Eve Sitowitz
 Jaynie Smeerin
 Ruth Lynn Sobel
 Stanley Sokoloff
 Katie & David Soroko
 Barbara Smith
 Mark Stankevich
 Janet Staples-Edwards
 Leila Straw
 Janice Tarr
 Karlene Taylor
 Linda Terry
 Stephen Thiroux
 Eileen T'Kaye
 Nancy Ward
 Bernard Weinraub
 Valerie Wildman
 Diane Wolfberg
 Tai-Ling Wong
 Marc Zachary

Thank you all!
 We have made every effort to acknowledge your generosity accurately. If an error has been made, please notify The Development Office immediately.
 development@
 fountaintheatre.com